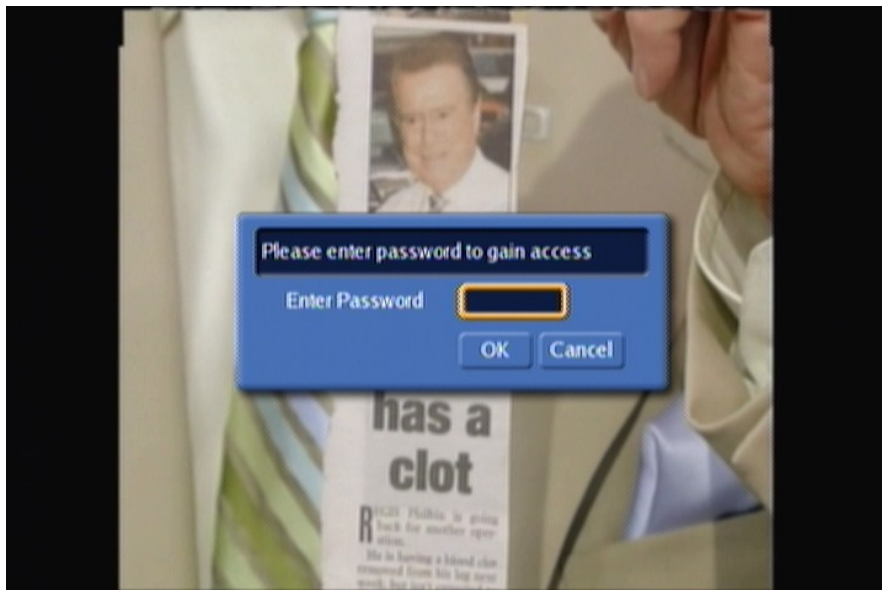


On your remote control press the “Menu” button

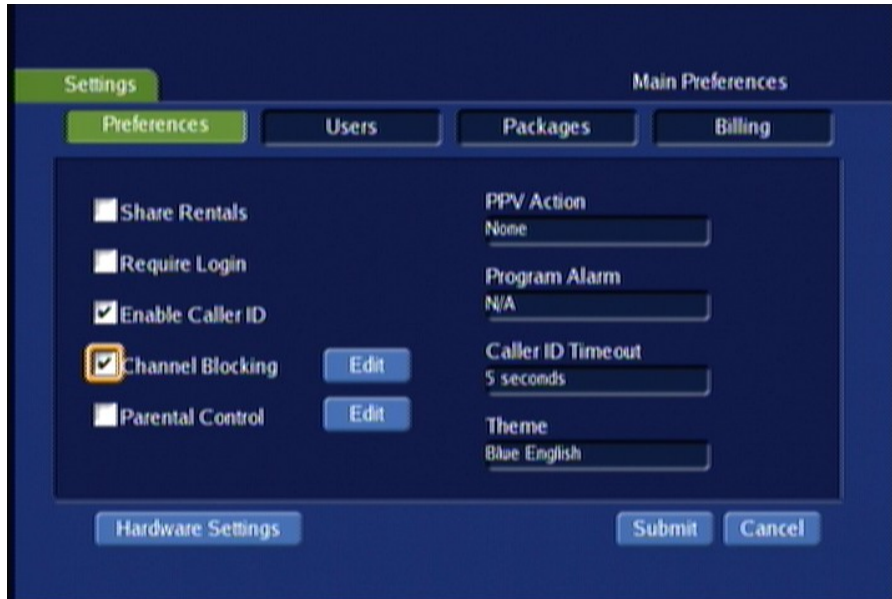
Use the arrow keys on remote control so the gold box is around “Settings” press OK on the remote control.



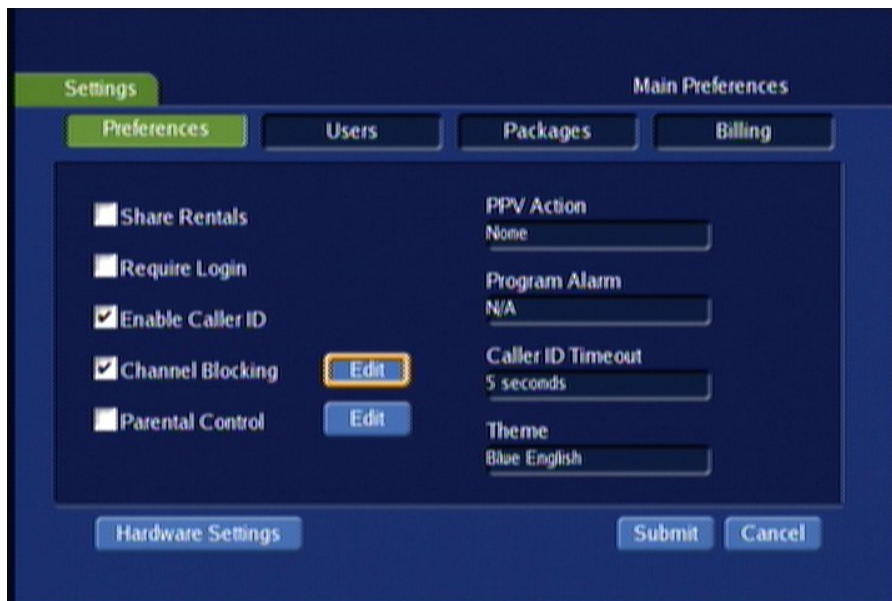
Enter password (the default password is 0) press OK on the remote control.



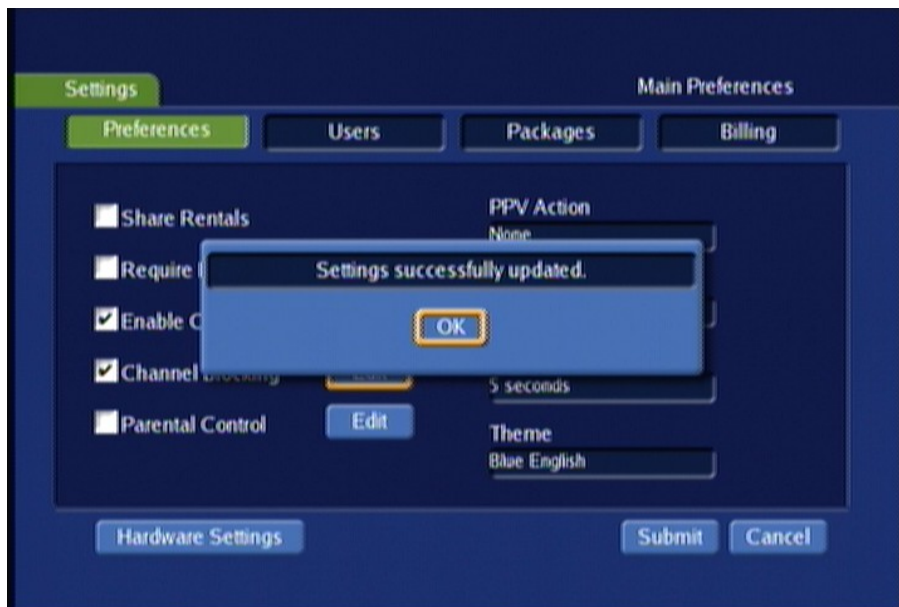
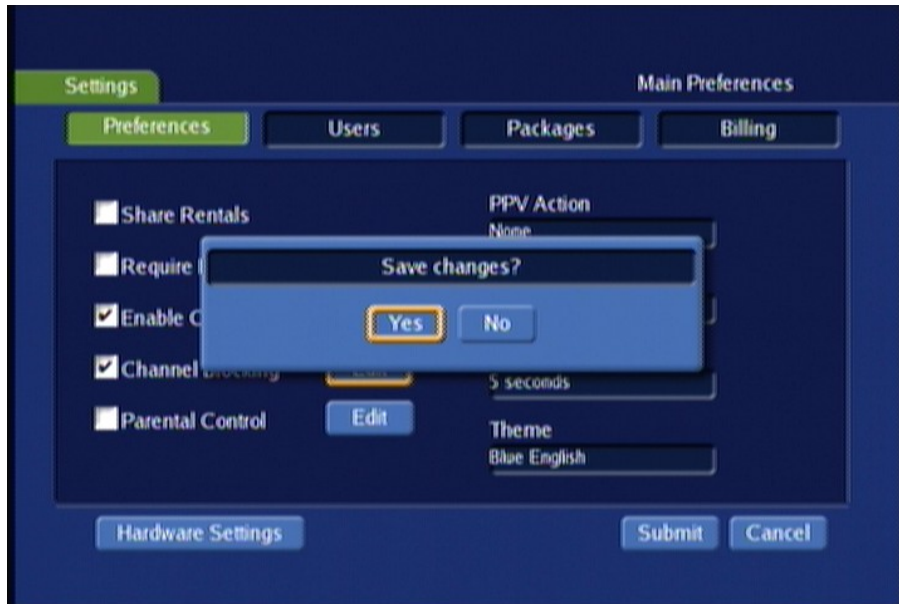
Use the down arrow on your remote control so the gold box is around “Channel Blocking” and press OK button on the remote control so the check mark shows in the white box next to “Channel Blocking”



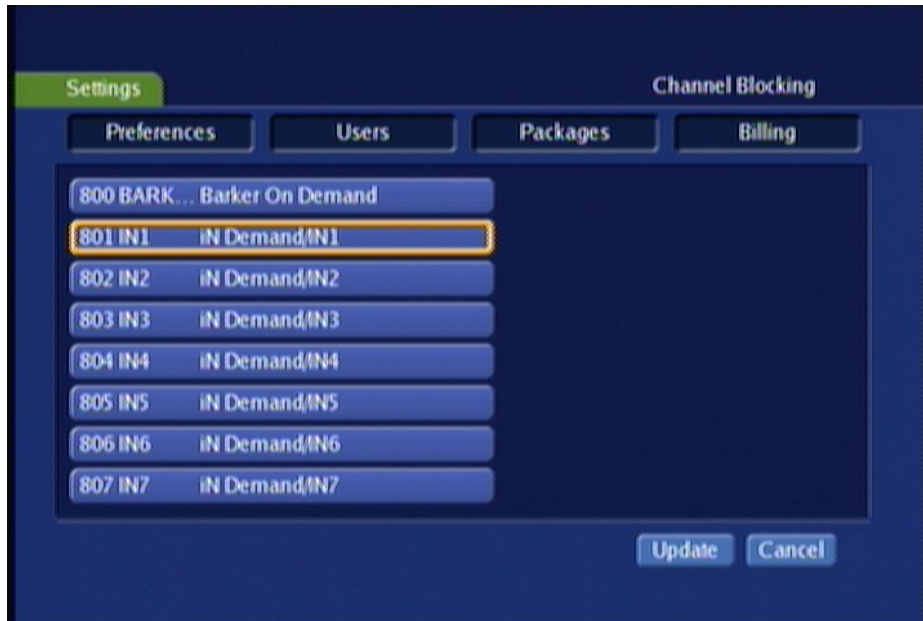
Use the right arrow on the remote control so the gold box is around the “Edit” button and select OK on your remote control



Click OK to say YES to save changes- Click OK to updated successfully



This screen will show all channels provided. Use the down/up arrow on the remote control until the channel you wish to block has the gold box around it. Press OK on your remote control to select the channel. Continue scrolling through list and selecting channels until all channels you wish to block have been selected.



Use the RIGHT arrow on your remote control so the gold box is around “Update” and press OK on your remote control



From the preferences screen use the arrows on your remote control so the gold box is around “Submit” and press OK on your remote control.





The channels you selected will now be blocked from viewing and from your on-screen guide. PPV channels start at 801 and music channels start at 900.

\*\*\*\*\*

You can also block programming based on TV rating. This is done using the “Parental Controls” option.

This is outlined on pages 46 & 47 of the Digital Video Users Guide.